

# 150± Acres

On Greenville/Laurens County Line



Drone Footage: <https://vimeo.com/365613830>

## Horse Creek Tract | Greenville/Laurens County Line

- Asking Price: \$5,500/acre
- Greenville County Tax Map #s 0572010100700 & 0572010100601 (a portion of) & Laurens County Tax Map #s 013-00-00-002 & 013-00-00-002 (a portion of)
- 3/4 mile of frontage on Horse Creek with beautiful hardwood creek bottoms
- 8+/- acres of twenty-seven year old planted loblolly pine
- 42+/- acres of seventeen year old planted loblolly pine
- 66+/- acres of seven year old planted loblolly pine
- 23+/- acres of four year old planted loblolly pine
- Large, thick swamp on the south side of the property



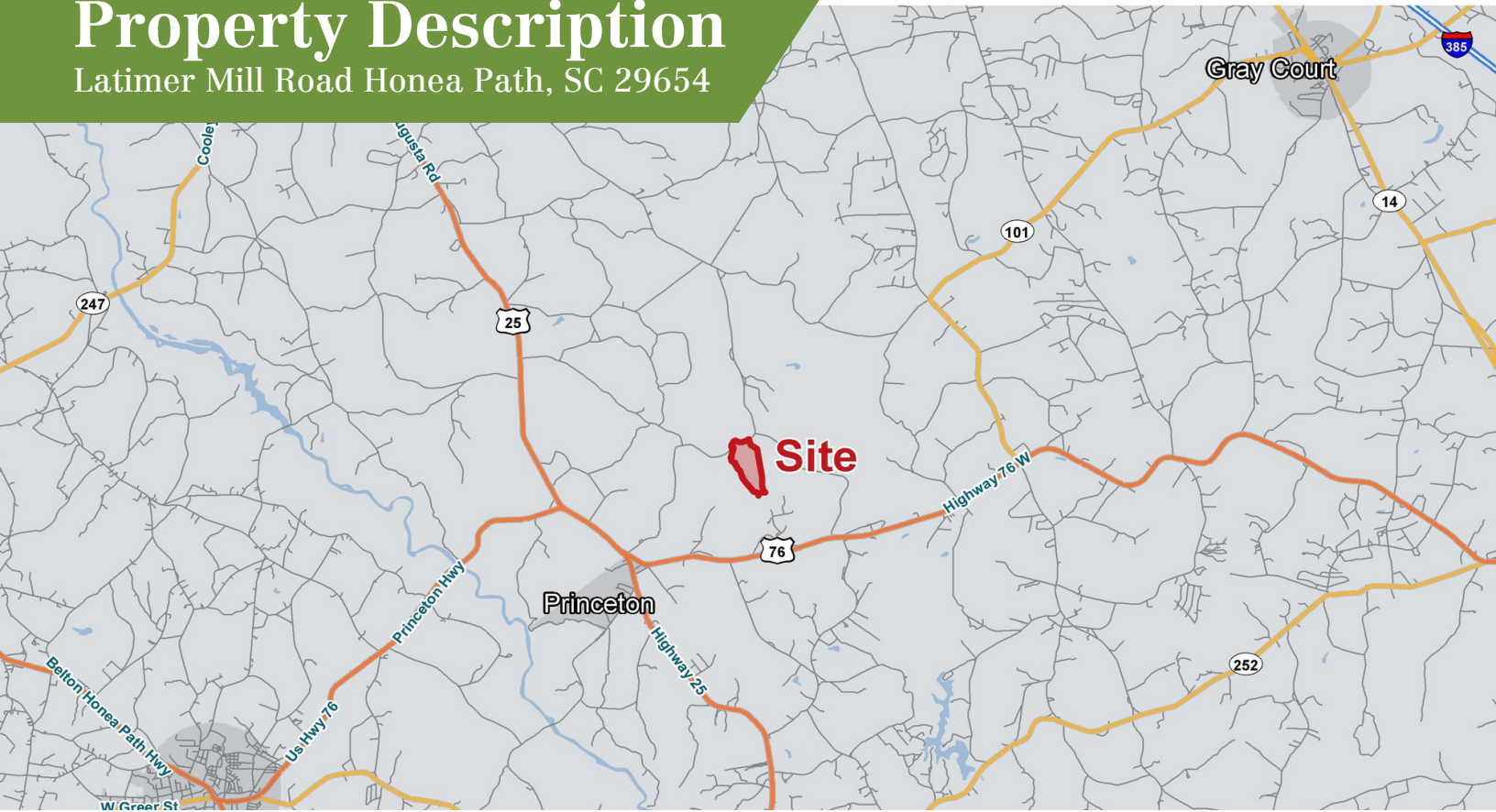
✉ Rusty Hamrick  
+1 864 232 9040  
rhamrick@naiearlefurman.com

No Warranty Or Representation, Express Or Implied, Is Made As To The Accuracy Of The Information Contained Herein, And The Same Is Submitted Subject To Errors, Omissions, Change Of Price, Rental Or Other Conditions, Prior Sale, Lease Or Financing, Or Withdrawal Without Notice, And Of Any Special Listing Conditions Imposed By Our Principals No Warranties Or Representations Are Made As To The Condition Of The Property Or Any Hazards Contained Therein Are Any To Be Implied.

📍 101 E Washington St  
Greenville, SC 29601  
naief.com

# Property Description

Latimer Mill Road Honea Path, SC 29654



## Property Overview

The Horse Creek tract is an excellent combination of four contrasting ages of planted loblolly pine stands, 3/4 of a mile of beautiful hardwood bottoms fronting on a major creek, two large food plots, and very close proximity to Greenville. The timber on the property has been professionally managed for many years and an excellent road provides quality access throughout the property. Perhaps the most intriguing aspect of the Horse Creek tract is the 14+/- acres of thick swamp along the southern boundary line that is part of a much larger swamp area (50-60 acres). This substantial wetland along Horse Creek flows into the Reedy River approximately 1.5 miles downstream and is a truly unique wildlife sanctuary.

## Location Overview

30+/- miles from downtown Greenville (40 minute drive)



# Drone Footage

Latimer Mill Road Honea Path, SC 29654



✉ **Rusty Hamrick**  
+1 864 232 9040  
rhamrick@naiearlefurman.com

No Warranty Or Representation, Express Or Implied, Is Made As To The Accuracy Of The Information Contained Herein, And The Same Is Submitted Subject To Errors, Omissions, Change Of Price, Rental Or Other Conditions, Prior Sale, Lease Or Financing, Or Withdrawal Without Notice, And Of Any Special Listing Conditions Imposed By Our Principals No Warranties Or Representations Are Made As To The Condition Of The Property Or Any Hazards Contained Therein Are Any To Be Implied.





# Property Photos

Latimer Mill Road Honea Path, SC 29654



✉ Rusty Hamrick  
+1 864 232 9040  
rhamrick@naiearlefurman.com

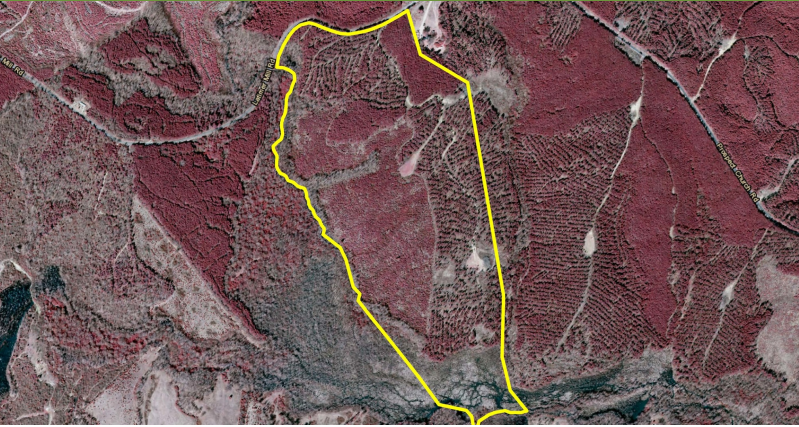
No Warranty Or Representation, Express Or Implied, Is Made As To The Accuracy Of The Information Contained Herein, And The Same Is Submitted Subject To Errors, Omissions, Change Of Price, Rental Or Other Conditions, Prior Sale, Lease Or Financing, Or Withdrawal Without Notice, And Of Any Special Listing Conditions Imposed By Our Principals No Warranties Or Representations Are Made As To The Condition Of The Property Or Any Hazards Contained Therein Are Any To Be Implied.





# Map Set

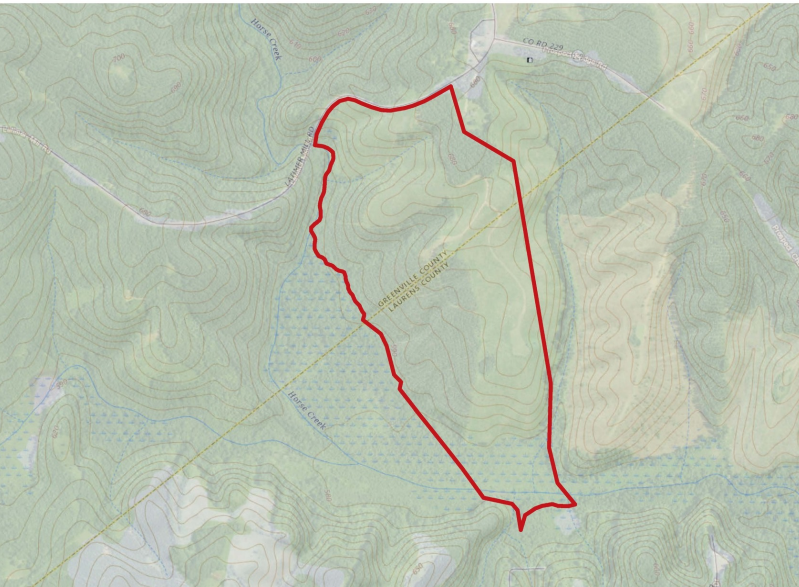
Latimer Mill Road Honea Path, SC 29654



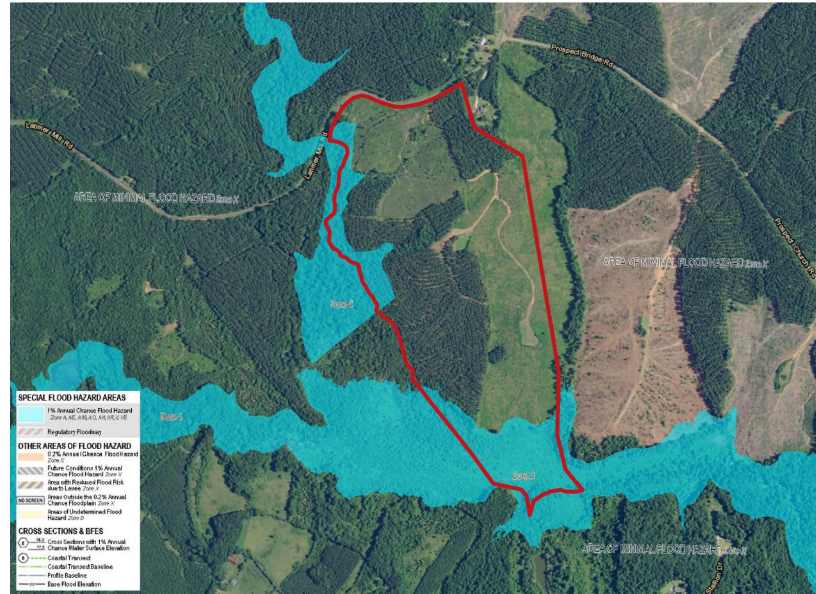
Topographical Map



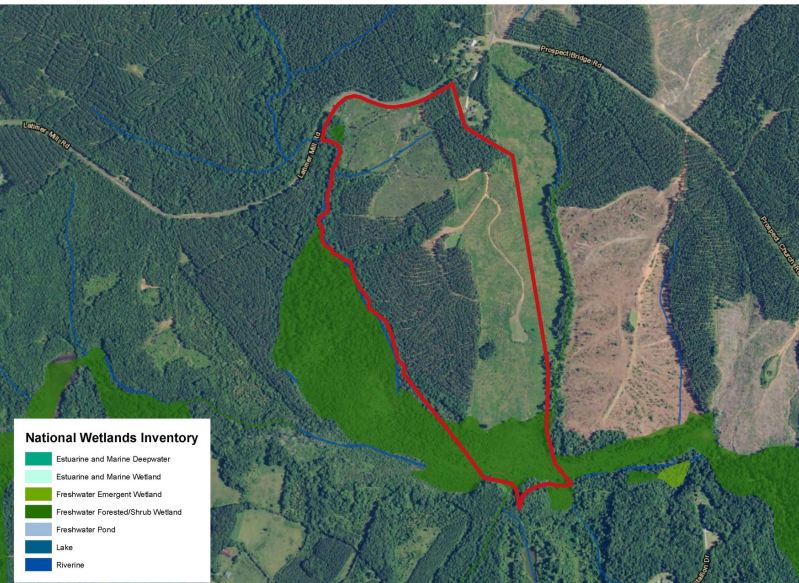
FEMA National Flood Hazard Layer



National Wetlands Inventory



Soil Survey



No Warranty Or Representation, Express Or Implied, Is Made As To The Accuracy Of The Information Contained Herein, And The Same Is Submitted Subject To Errors, Omissions, Change Of Price, Rental Or Other Conditions, Prior Sale, Lease Or Financing, Or Withdrawal Without Notice, And Of Any Special Listing Conditions Imposed By Our Principals No Warranties Or Representations Are Made As To The Condition Of The Property Or Any Hazards Contained Therein Are Any To Be Implied.

✉ Rusty Hamrick  
+1 864 232 9040  
rhamrick@naiearlefurman.com

